



Radium Girls

Pinecrest Players 2024 Senior Show





Introduction

- ❖ Who are we?
- ❖ What are we requesting?
- ❖ What will we go over?



What's The Plot?

Radium Girls takes place in 1926, and is based on the true story of Grace Fryer, a dial painter who experienced the tragic effects of radium firsthand. The show follows Grace as she fights for justice in court against the US Radium Corporation while simultaneously dealing with the backlash from her coworkers, family, friends, and her former boss, Arthur Roeder.





Details

- ❖ Something new!
 - ❖ Cast
 - ❖ Open auditions





Potential Trigger/Content Warnings

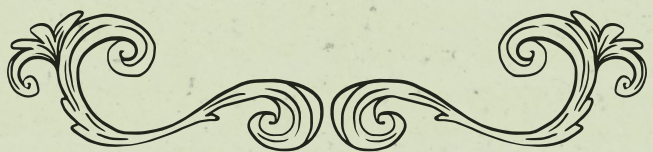
(And How We'll
Handle Them)

- ❖ Gory SFX Makeup
- ❖ Sexism
- ❖ Death
- ❖ Violence





Our Jobs, Progress, and Plans!



Acting Advisor - Nolan McGrath

- ❖ Assisting director in casting
- ❖ Working alongside other actors to ensure good presence on stage and good chemistry
- ❖ Provide notes and advice when necessary

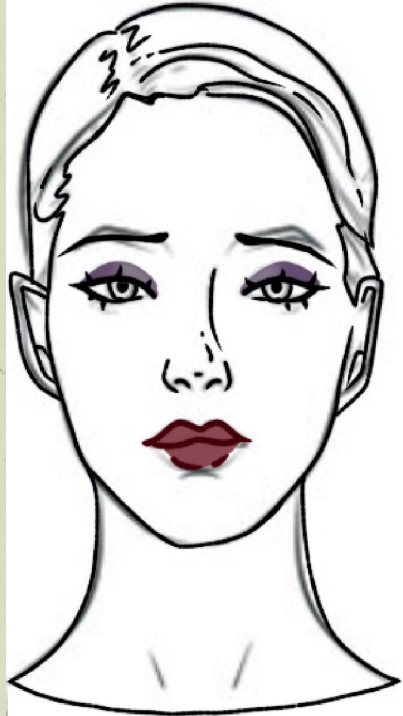


Makeup Design - Nev Hancock & Mianne Goforth

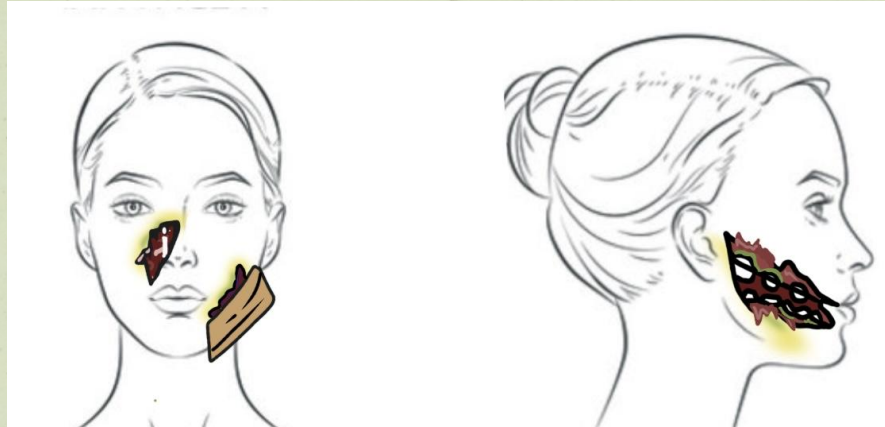
- ❖ Responsible for coordinating all aspects of makeup/hairstyling for this production
- ❖ Develop cohesive vision for the appearance of each character, keeping in mind the time period of the show
- ❖ Work to design SFX makeup including injuries and glowing face paint



Examples of Design Ideas



Front Irene



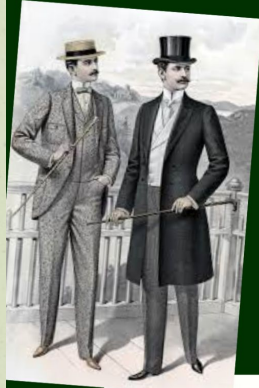
Front Grace
"PIL"

Costume Design - Eliza Hage & Arija Boin

- ❖ Design and curate costumes for cast that suit the time period of the show
- ❖ Ensure actors are comfortable in their chosen costumes



RADIUM GIRLS COSTUME BOARD



Props Design & Dramaturg - Bella Fernandes

- ❖ Design period-accurate props that will be used throughout the show
- ❖ Research history of the show, and work with director to ensure accuracy within the period piece
- ❖ Ensure authenticity of the show



Lighting Design - Josh Markotich

- ❖ Utilize simple lighting areas, all of which we're comfortable with from past experience
- ❖ LEDs on First Electric, top light, wash light
- ❖ Experiment with lighting gels and gobos





Scenic Design - Bunny Yow

- ❖ Design & layout desired set for the show
- ❖ Work closely with the construction team to ensure that the correct vision is coming to life
- ❖ Responsible for general detail work and painting of the set



Biggest idea:
changeable curtain
background with
blacklight / glowing
properties



Construction - Astrid Ruiz & Rizz Nance

- ❖ Execute ideas of scenic designer
- ❖ Ensure that the set is safe for actors and technicians use
- ❖ Utilize platforms, rolling flats to form “walls”, stairs, and railings
- ❖ Emulate a large factory setting



Stage Manager - Elle Wadas

- ❖ Responsible for keeping track of rehearsal information
- ❖ Director's "right hand man"
- ❖ Take and keep track of blocking notes
- ❖ Oversee technical crew alongside director



Publicity - Alexi Colones

- ❖ Organize fundraisers
- ❖ Utilize social media platforms such as Instagram, Tiktok, Facebook, etc to promote our show
- ❖ Create and hang show posters around campus and town





In Conclusion





“We will not be silent. We will
not be forgotten.”

—Kate Moore, *The Radium Girls*





Thank You!

-Pinecrest Players Class of 2024-

