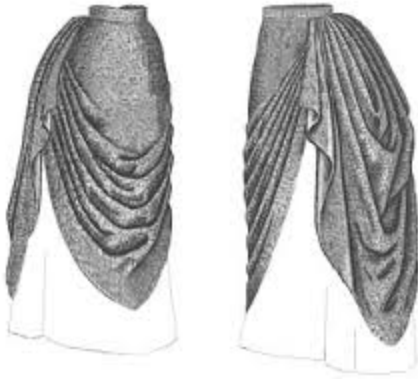


## Dolly Levi

My vision for Dolly is classic 1880 dress with a quirky flare. Dolly is bored with life very easily and so she must have interesting fashion sense. She is stylish and very up on the trends of her time. With every outfit, she will wear a soft yellow pair of gloves. She must stand apart as to make an impression, so no other character on stage will be wearing the same colors as she is. When we first meet Dolly she has come to visit Mr. Vandergelder. Dolly will be wearing green when we first meet her. A green patterned dress with a darker green draping. The draped skirt will have pink tassels on its edges. She will be wearing a pink long sleeved shirt with green flowery embroidery. Her yellow gloves will be pulled up over her sleeves. Her shoes will be period heels, custom made to match the dress. A green shoe with pink and green embroidery, with yellow bows to match her gloves.



This is my favorite picture of an overall design. The color is exactly what I envision. This will be inspiration for the base color and pattern scheme of Dolly's costume. The sleeves will be altered as well as the form of the skirt. The gloves in this picture are perfect- yellow.



The skirt's draping will be like the draping in this image, and will be a different pattern or color than the green base dress. I may add small tassels or flowers along the lining of the draping skirt.



These images show the different patterns and textures that can be present in the skirt of the dress. Patterns that are a bit “out there” and busy will fit Dolly’s personality. The one on the left is more similar to what I am looking for because the jacket or shirt on top is separate from the piece over the dress.



As for the sleeves and top half of the dress, this is what I am looking for. It will provide more opportunity for pattern and the gloves are still noticeable. The style is perfect with the embroidery for decoration rather than buttons.



The two hats on the top are the style of hat that will be featured in Dolly's costume. They are unique and fun and the green hat on the right matches the color scheme well. There will be a bow under the chin just like the images above and flowers with feathers like the right image.



This style of shoe is perfect. The bows add a nice touch and I would like to see them as yellow, matching the gloves.



The pattern of Dolly's shoes will be similar to the above pattern. The shoe will be green with cream, pink, and darker green details. The style of the shoe will be like the one above this with straps and yellow bows. The pattern will continue onto the straps.



Dolly's light yellow gloves, like the ones in the very first picture, will be the same length as the ones pictured above. They will be pulled up over her sleeves as well.



Women wore bangles in the 1880's, and to add some flash to Dolly, I will have her wearing a bangle on each wrist, over the arm of her gloves. These will add sparkle and something interesting to the arm area. An interesting, quirky piece like these vintage bangles is perfect for Dolly.